

# THE CRUCIBLE CENTRE

*The Crucible Valley is a beautiful landscape;  
and for the development of Consciousness it forms a natural inner landscape.*



The Crucible Centre offers a totally secluded valley with all the quiet of the bush for yoga, meditation and other consciousness groups. We offer a small-group spiritual retreat centre, with accommodation for up to seventeen. There are kangaroos and wallabies, a few cattle and many, many birds. It is a relaxing place, and feels very far away.

The Crucible Centre is committed to keeping a low ecological footprint. It is the only centre in the Blue Mountains that runs exclusively on solar power. We ask guests to join in our commitment to Global thinking and respectfully keep their blow dryers and other high-powered devices at home. This is why we have a small fridge, do not have a microwave, and promote toast-making and water-boiling on the gas stove.



The Sanctuary from the Glade



The valley and the enclosed orchard and vegetable garden

The Crucible Centre offers a far-away retreat in a mountain setting. It nestles on steep wooded slopes overlooking green pasture. Both the Sanctuary and the Lodge are surrounded by eucalyptus bush that creates an intimate ambience. The setting feels protected and remote.

## The Crucible facilities:

- ☉ the Sanctuary with padded carpet is a stretched hexagon,
- ☉ the Oak Room above the stone courtyard for intimate groups,
- ☉ the Lodge with beds for fifteen, showers, toilets and kitchen
- ☉ and also a double bed in a room by the Sanctuary,
- ☉ the Sanctuary has gas heating and a formidable stereo system,
- ☉ heating in the Lodge is by a wood-fired slow-combustion unit,
- ☉ joining these is a 180-metre path through the bush,
- ☉ water comes from a mountain spring, sparkling and fresh,
- ☉ there is a large dam for swimming, with table tennis alongside,
- ☉ and long walks through the hills and into Fairy Dell.

All the buildings and the dam are physically and visually separate from our house and provide privacy for you and your group. See [www.cruciblecentre.com/crucible-valley-hartley-vale.html](http://www.cruciblecentre.com/crucible-valley-hartley-vale.html).

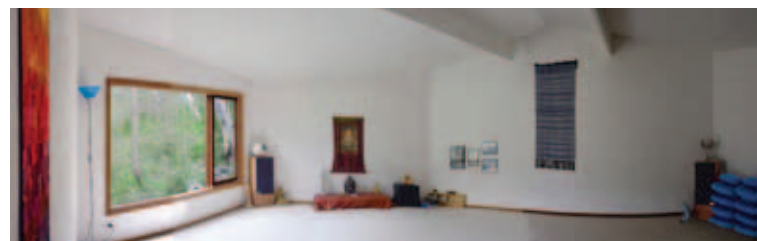
We provide floor-seats and cushions in the Sanctuary, candles and items for the altar. The Lodge can sleep fifteen in bunks and single beds (including one in the lounge by the heater). We provide one pillow and two blankets per bed, and kitchen and dining equipment.

The facilities and the setting require us to walk along narrow and uneven footpaths and to cross a stile over the electric fence, and so are not appropriate for those with disabilities. In keeping with the intimate nature of the retreat there is no vehicular access to Lodge or Sanctuary.

**John and Hilary James**      **02 6355 2223**  
**043 1616 227**      **admin@cruciblecentre.com**



The Sanctuary and swimming dam down the hill



The interior of the hexagonal Sanctuary

# THE CRUCIBLE CENTRE

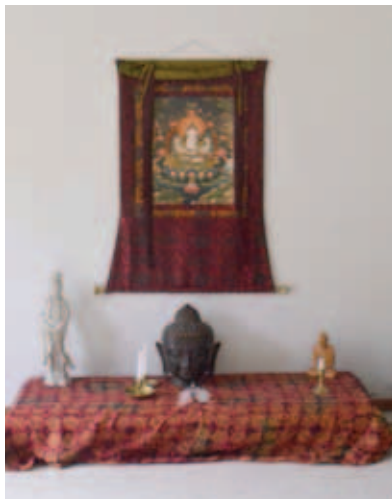
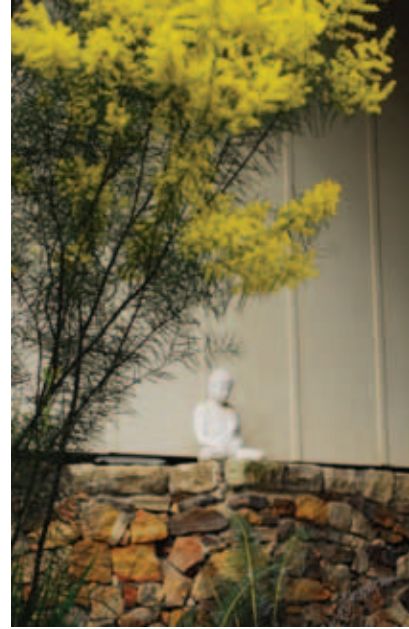
*The Crucible Valley is a beautiful landscape;  
and for the development of Consciousness it forms a natural inner landscape.*

## Food and catering:

You may self-cater, but as the frig in the Lodge is small we can arrange for you to use our personal deep-freeze outside our house. The semi-catering that we offer includes breakfast and two hot dishes to be eaten in the Lodge. You would bring all the extras you may fancy to complete your meals:

- ☉ for lunch a home-made vegetable soup from what is in our garden,
- ☉ a cooked vegetarian dish as the basis for dinner,
- ☉ one basket of salad and fruit from our garden, depending on the season and
- ☉ one home-made wholemeal loaf and muesli for breakfast, with jams and honey,
- ☉ and the usual loose-leaf tea and ground coffee, milk and sugar.

Beyond that, you would bring whatever else is desired.



The White Tara in the Sanctuary



The vegetable garden protected from the birds



The Lodge in its bushland setting

## Bring with you:

- ☉ Sheets, pillow slips and towels, torch and toiletries,
- ☉ if the weather is cold, bring additional blankets,
- ☉ thick socks as no shoes in the Lodge or Sanctuary,
- ☉ wet-weather gear and sturdy shoes if rain is forecast,
- ☉ your own yoga mats, props and blankets.

## Our charges:

The rent for the Lodge and the Sanctuary with self-catering is \$140 per person for a two-day stay, whether you are here for two nights or one. One facilitator is free. This price is introductory until the end of 2012.

For semi-catering we add \$40 per person to provide the food for breakfast, lunch and dinner as listed above. If you need additional discuss with us. Please clean all rooms and wash up before you leave.

We do not have gst, nor card facilities, but cash, cheques and internet banking are fine. Full due amount on arrival. Deposit/bond of \$300 will secure the booking, and will be repaid one day after your party leaves.

We cover public risk and fire insurance, you are responsible as the facilitator for insurance for yourself and your guests. There is a first aid kit in the kitchen and fire safety instructions on the board in the Lodge.

## Directions to the Crucible Centre:

How to get here with a link to a mud map is found on [www.cruciblecentre.com/crucible-centre-location.html](http://www.cruciblecentre.com/crucible-centre-location.html). From Sydney we are a 133 kilometre 2 hour drive either via the Great Western Highway or Bells Line of Road.

There are two paths from the Lodge. The downhill path leads to our house, while the one on the left lies through the bush and leads to the Sanctuary.

